



FDL-PCI Interface card

User Manual

February 2005

Copyright 1996-2005 DTA s.r.l.

All rights reserved. The reproduction of any part of this manual is allowed only with the written authorization by DTA s.r.l..

The contents of this manual may be subject to changes without any warning.
DTA are not responsible for errors that may occur in this manual.

Revision 2.2 dated 18/02/2005

CONTENTS

<i>PERSONAL COMPUTER MINIMUM REQUIREMENTS</i>	<i>4</i>
<i>PERSONAL COMPUTER RECOMMENDED REQUIREMENTS</i>	<i>4</i>
<i>SCHEME OF THE INSTALLATION PROCEDURE</i>	<i>5</i>
<i>CONNECTING THE FDL INTERFACE CARD TO THE PC</i>	<i>6</i>
<i>LIBRARY & FDL-PCI INSTALLATION</i>	
<i>WINDOWS 98</i>	<i>7</i>
<i>WINDOWS ME</i>	<i>10</i>
<i>WINDOWS 2000</i>	<i>11</i>
<i>WINDOWS XP</i>	<i>14</i>
<i>LINUX</i>	<i>15</i>
<i>WINDRIVER REGISTRATION</i>	<i>17</i>
<i>INDEX</i>	<i>21</i>

PERSONAL COMPUTER MINIMUM REQUIREMENTS

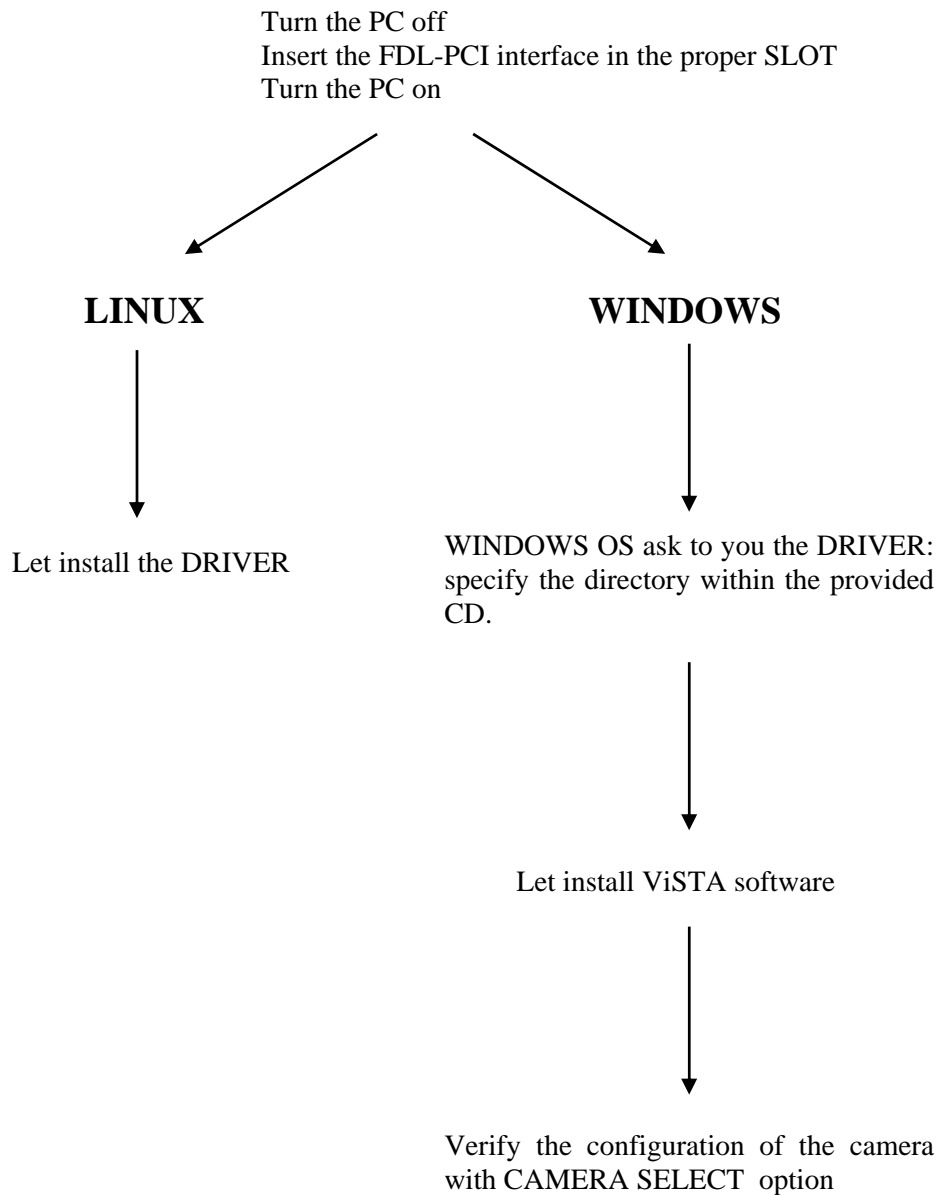
- CPU Celeron 1 Ghz .
- 256 Mb di RAM.
- Microsoft Windows 98, ME.
- A free PCI expansion slot for the connection between the PC and the camera

PERSONAL COMPUTER RECOMMENDED REQUIREMENTS

- CPU Pentium IV 2 GHz
- 512 Mb RAM
- A free PCI expansion slot for the connection between the PC and the camera

SCHEME OF THE INSTALLATION PROCEDURE

When you use the camera for the first time, you must install the library and the FDL-PCI interface. For this purpose, please follow the procedure described in the next pages and schematized in the diagram below:

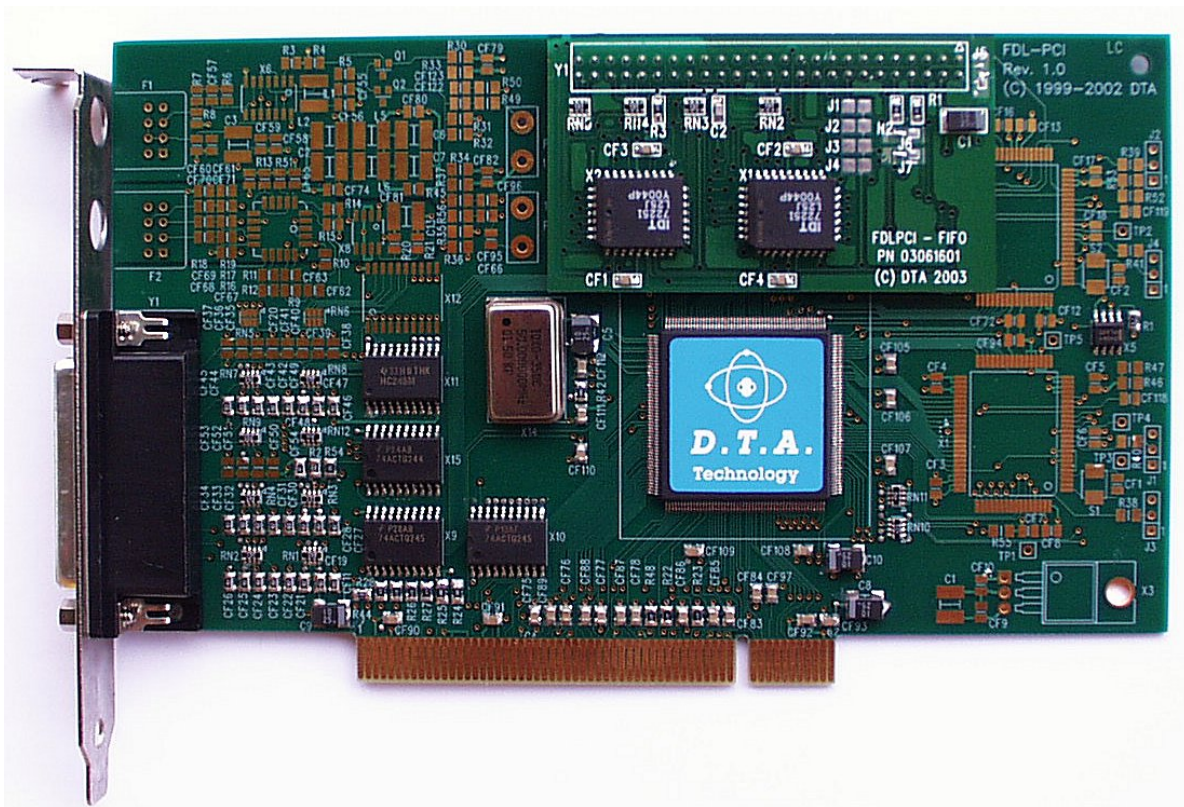


CONNECTING THE FDL INTERFACE CARD TO THE PC

To install your FDL interface card, do as follow :

- ⇒ Turn your PC off, including any peripheral.
- ⇒ Remove the external case of the PC (please see the relevant instructions in the PC Handbook).
- ⇒ Choose a free PCI expansion slot. Remove the relevant back cover by means of a screwdriver.
- ⇒ Insert the camera interface card into the expansion slot. Please make sure that the card is properly and fast inserted. Fix the card by screwing the relevant screw again.
- ⇒ Reassemble the PC case.

Turn the PC on once again. The interface card installation has been completed.



FDL-PCI interface card

In case of a fiber optic link connection, a dedicated FDL-PCI is provided with the proper connectors.

LIBRARY & FDL-PCI INSTALLATION

The installation of the library is always linked to the installation of the camera, of course. For this purpose you just need to install the PCI interface as well.

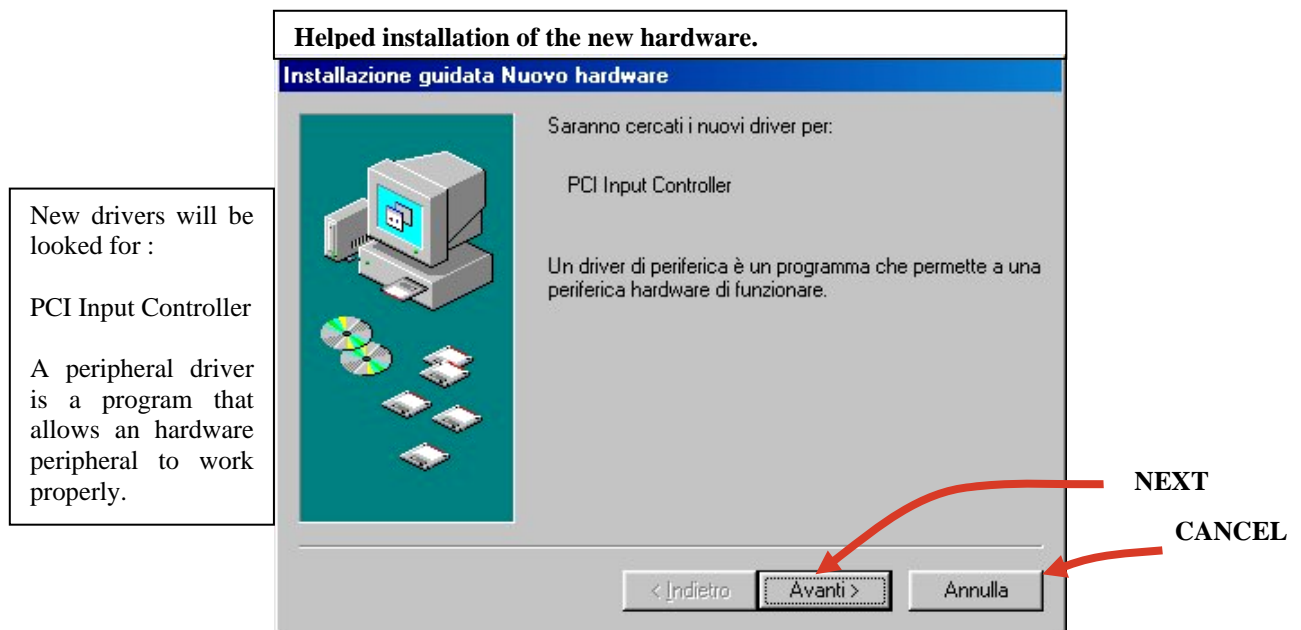
Let's analyse the sequence of operations to be carried out according to the different Operating Systems.

Once you turn the system on for the first time with the FDL-PCI interface on, you will be asked to specify where the available drivers are. Follow the steps on the basis of your Operative System.

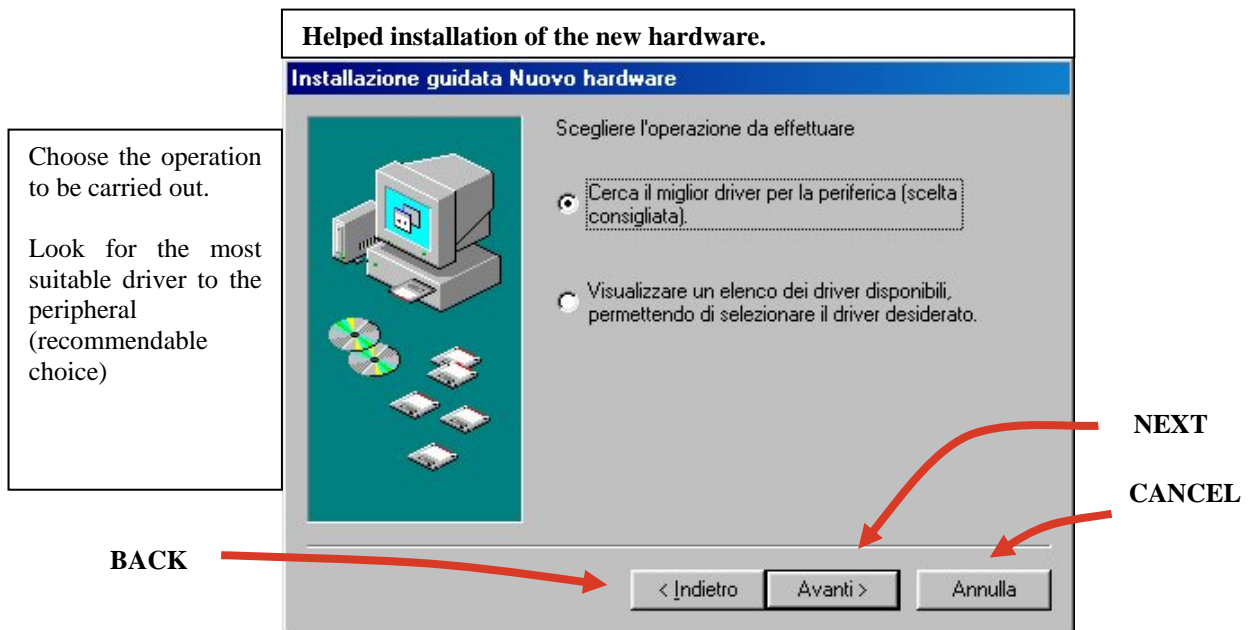
WINDOWS 98

(Any window refers to the OS written in ITALIAN. The charts next to the images correspond to the explanatory notes translated into ENGLISH)

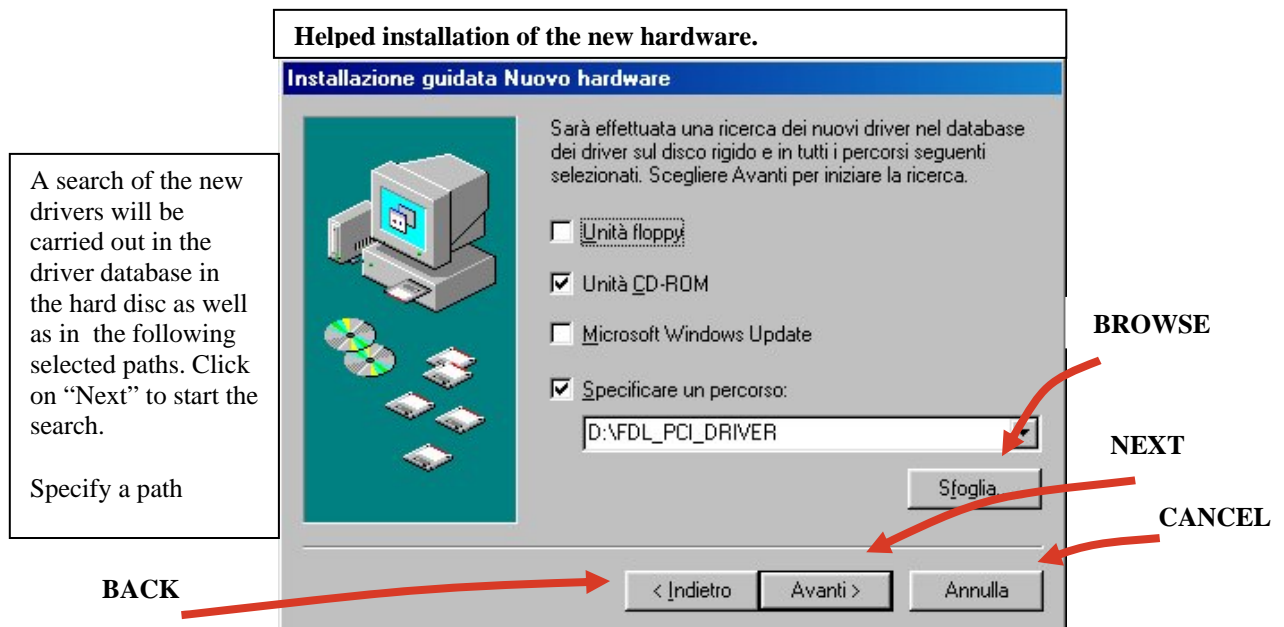
- 1) Insert the FDL-PCI card in the slot of the motherboard and turn the PC on. The PC will automatically find the FDL-PCI card and open a window like the one shown below. Click on "Next" to continue the installation



- 2) The PC will have to look for the most suitable driver to the peripheral and ask if you'd rather do so automatically or choose it from a list of available drivers. Choose the option "Find the most suitable driver to the peripheral (recommendable choice)" and then click on "Next".



- 3) The PC will have to look for the most suitable driver to the peripheral and ask if you'd rather do so automatically or choose it from a list of available drivers. Choose the option "Find the most suitable driver to the peripheral (recommendable choice)" and then click on "Next".



- 4) As soon as the PC finds the suitable driver, a window will appear like the one shown below. Click on "Next" to continue the installation.



- 5) As soon as the copy of the files is carried out, a window will appear : it is the evidence that the installation of the drivers necessary for the proper functioning has taken place. Click on "Finish" to end the installation.

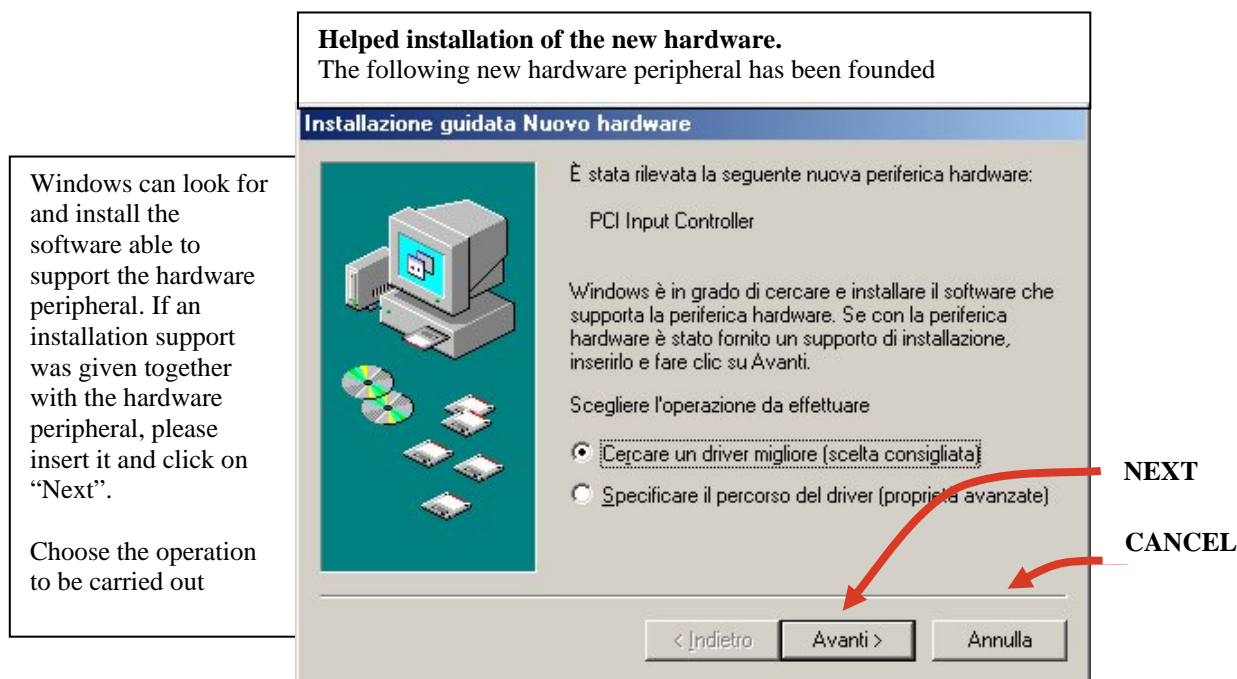


WINDOWS ME

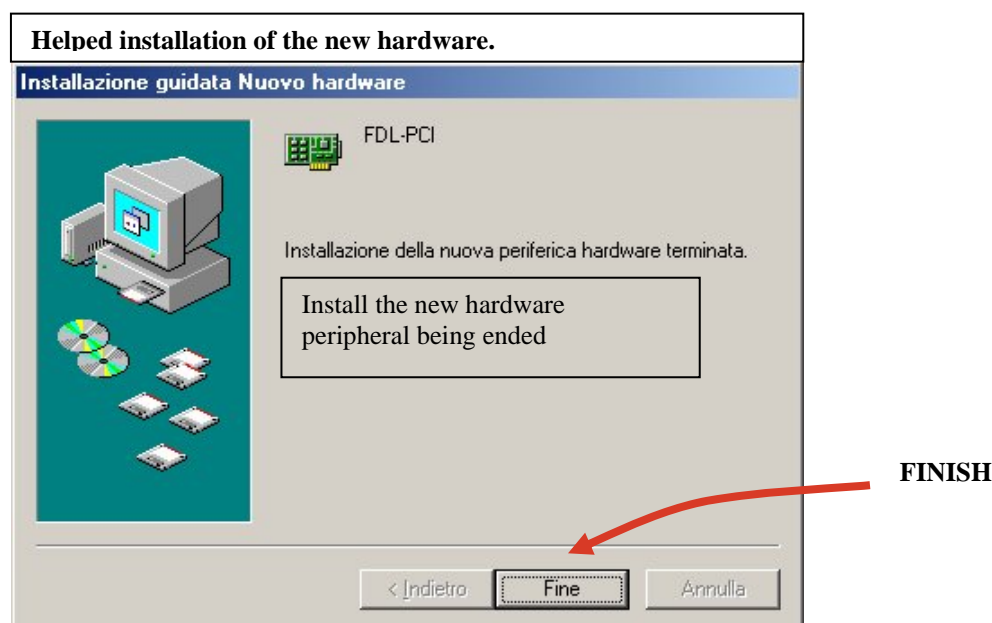
(Any window refers to the OS written in ITALIAN. The charts next to the images correspond to the explanatory notes translated into ENGLISH)

- 1) Insert the FDL-PCI card into the slot of the motherboard and turn the PC on.

As soon as the system gets started, the PC will update the driver database and then a window (like the one shown below) will appear. Insert the "ViSTA" CD into the CD-ROM reader, wait a few seconds to allow the reading of the CD. Then click on "Next".



- 2) The PC will start to look for the most suitable driver to be copied onto the hard disc. Once this operation is over, a window like the one shown below) will appear. Click on "Finish" to end the installation.



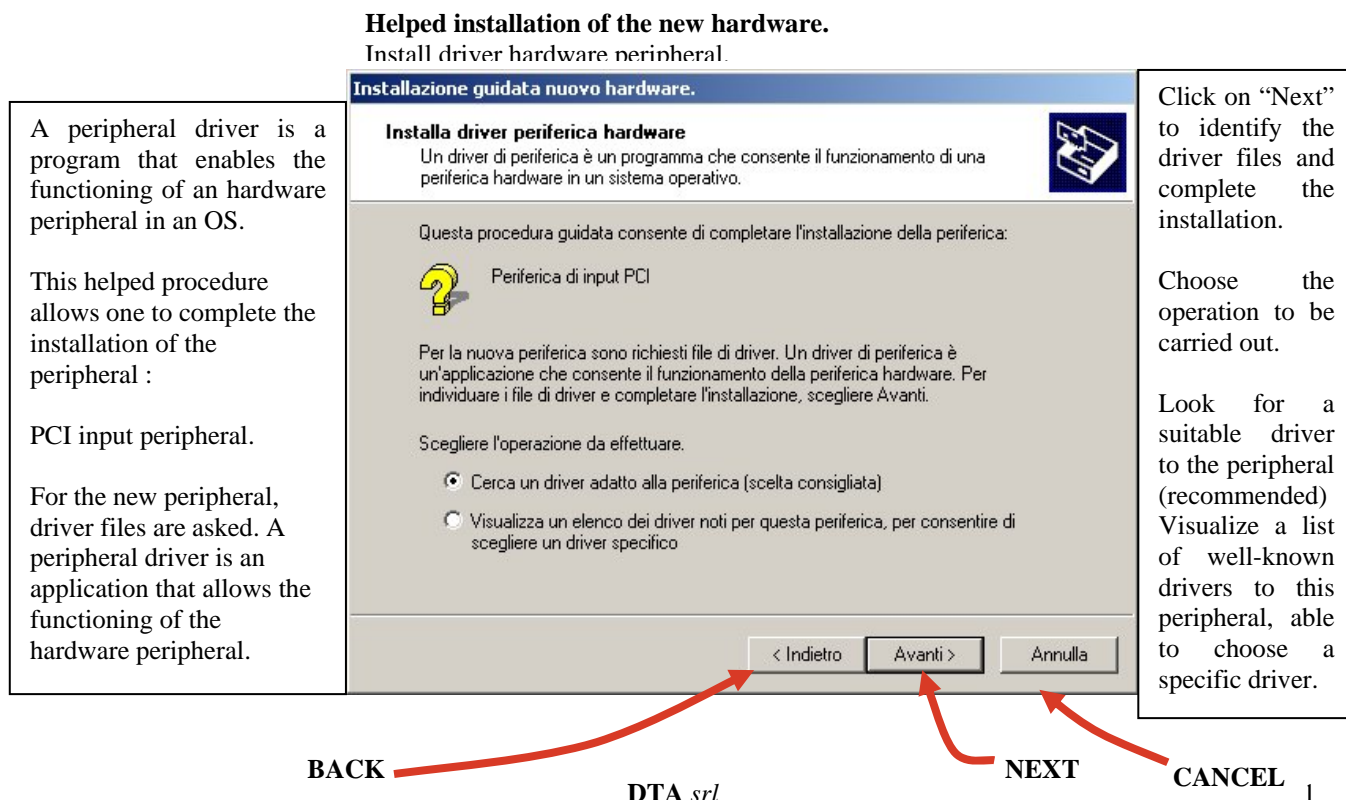
WINDOWS 2000

(Any window refers to the OS written in ITALIAN. The charts next to the images correspond to the explanatory notes translated into ENGLISH)

- 1) Insert the FDL-PCI card into the slot of the motherboard and turn the PC on.
The PC will automatically find the FDL-PCI card and open a window like the one you can see below.
Click on “NEXT” to go on with the installation.



- 2) The PC will look for the most suitable driver to the peripheral; it will ask if we prefer look for it by default or if we'd rather choose the driver among a list of available drivers. We recommend you to select “LOOK FOR THE DRIVER SUITABLE TO THE PERIPHERAL (RECOMMENDED)” and then press “NEXT”.



- 3) Please insert the “VISTA LITE” CD and close “QUICK INSTALL” menu in case it gets opened due to the CD autorun. Then specify where the PC has to look for the driver.
Select the CD-ROM reader and specify the following path : D:\FDL_PCI_driver (D: is the letter with whom the CD-ROM reader is identified). Then press “NEXT”.

Helped installation of the new hardware.
Identify driver file.

Digit the driver file path.

Search of the driver files for the following hardware peripheral :

PCI input peripheral.

A search of the suitable drivers will be carried out in the driver database present at the PC as well as at the optional searching paths herewith specified.

Click on “Next” to start the search. If you carry it out by a floppy disc or a CD-ROM, insert one of them before choosing “Next”

Optional searching paths

Floppy unit
CD-ROM unit
Specify a path

BACK NEXT CANCEL

- 4) As soon as the PC finds the right driver, a window will appear (the same as the one shown below). Click on “NEXT” to continue the installation.

Helped installation of the new hardware.
Outcomes of the file driver search.

The helped procedure has finished the search of the driver files for the hardware peripheral.

The peripheral driver that has been found is the following one :

PCI input peripheral

A driver for this peripheral has been found out. Click on “Next” to install the driver.

e:\.....

NEXT

CANCEL

BACK

- 5) When the PC ends to copy any file, a window appears as a confirmation of the performed installation of the drivers necessary for the proper functioning. Choose “FINISH” to end the installation.

Helped installation of the new hardware

Finishing of the helped installation of the new hardware under progress.



FINISH

WINDOWS XP

(Any window refers to the OS written in ITALIAN. The charts next to the images correspond to the explanatory notes translated into ENGLISH)correspond to the explanatory notes translated into ENGLISH)

- 1) Insert the FDL-PCI card into the slot of the motherboard and turn the PC on. As soon as the system gets started, a window (like the one shown below) will appear. Insert the "VISTA LITE" CD into the CD-ROM reader, close the "Quick Install" - it may open due to the CD autorun - . Select the option "Install the software automatically (recommendable choice)". Then click on "Next" to continue the installation.

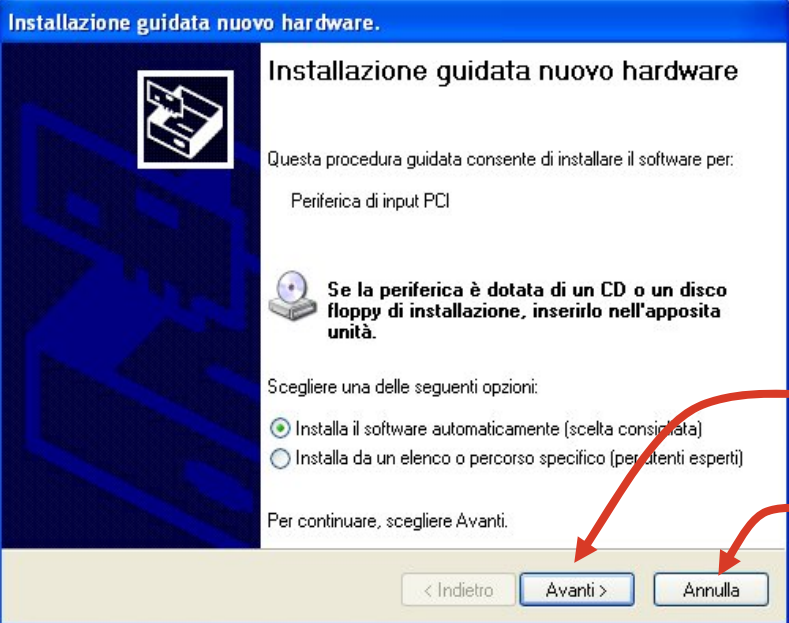
Helped installation of the new hardware

This helped procedure allows one to install the suitable software to :

PCI input peripheral

If the peripheral is provided with a CD or an installation floppy disc, insert it in the proper unit.

Choose one of the following options :
Install the software automatically (recommendable choice)
Install by taking it from a list or a specific path (for experienced users).



NEXT

CANCEL

- 2) The PC will start to search for the most suitable driver to the peripheral. As soon as it finds it, a window (like the one shown below) will appear. Click on "Finish" to end the installation.



FINISH

LINUX

System Requirements

- Linux 2.0.31 or higher (can be embedded Linux or Linux 2.4x)
- An x86 processor.
- Any 32-bit development environment supporting C (such as GCC).

Preparing the system for installation

In Linux, kernel modules must be compiled with the same header files that the kernel itself was compiled with. Since WinDriver installs the kernel module **windrvr6.o**, it must compile with the header files of the Linux kernel during the installation process.

Therefore, before you install WinDriver for Linux, verify that the Linux source code and the file **versions.h** are installed on your machine:

Install linux kernel source code

- If you have yet to install Linux, please choose **Custom** installation when performing the installation and then choose to install the source code.
- If Linux is already installed on the machine, you must check to see if the Linux source code was installed. You can do this by looking for linux in the **/usr/src** directory. If the source code is not installed, you can either reinstall Linux with the source code, as described above, or you can install the source code by following these steps:

1. Login as super user.

2. Type:

```
/ $ rpm -i /<source location>/ <Linux distributor>/RPMS/kernel-source-<version number>
```

(For example: to install the source code from the Linux installation CD-ROM, for RedHat 7.1, type:

```
/ $ rpm -i /mnt/cdrom/RedHat/RPMS/  
kernel-source-2.4.2.-2.i386rpm)
```

TIP!

If you do not have an RPM with the source code, you may download it from:

<http://rpmfind.net/linux/RPM/>.

Install version.h

- The file **version.h** is created when you first compile the Linux kernel source code. Some distributions provide a compiled kernel without the file **version.h**. Look under **/usr/src/linux/include/linux/** to see if you have this file. If you do not, please follow these steps:

1. Type:

```
/ $ make xconfig
```

2. Save the configuration by choosing **Save and Exit**.

3. Type:

```
/ $ make dep.
```

Before proceeding with the installation, you must also make sure that you have a linux symbolic link. If you do not, please create one by typing:

```
/usr/src $ ln -s <target kernel>/ linux
```

(For example: for Linux 2.4 kernel type:

```
/usr/src $ ln -s linux-2.4/ linux)
```

Installation

1. Insert the **DTA SDK CD** into your Linux machine CD drive or copy the downloaded file to your preferred directory.
2. Change directory to your preferred installation directory (your home directory, for example):
`/$ cd ~`
3. Extract the file **WDxxxLN.tgz** (where xxx is the version number):
`~$ tar xvfz /<file location>/WDxxxLN.tgz`
For example:
 - o From a CD:
`~$ tar xvfz /mnt/cdrom/LINUX/WDxxxLN.tgz`
 - o From a downloaded file:
`~$ tar xvfz /home/username/WDxxxLN.tgz`
4. Change directory to WinDriver (this directory gets created by tar):
`~$ cd WinDriver/`

NOTE:

From version 5.x and above this directory gets created by tar, but in versions preceding 5.x the WinDriver directory does not get created by the extraction. Therefore, when working with versions preceding 5.x (version 4.33, for example) first create a directory (e.g., WinDriver) before proceeding with the installation.

(/\$ **mkdir** ~/WinDriver)

5. Install WinDriver:
 - a. ~/WinDriver\$ **make**
 - b. Become super user:
`~/WinDriver$ su`
 - c. Install the driver:
`~/WinDriver# make install`
6. Create a symbolic link so that you can easily launch the DriverWizard GUI
`~/WinDriver$ ln -s ~/WinDriver/wizard/wdwizard/ usr/bin/wdwizard`
7. Change the read and execute permissions on the file **wdwizard** so that ordinary users can access this program.
8. Change the user and group ids and give read/write permissions to the device file **/dev/windrvr6** depending on how you wish to allow users to access hardware through the device.
9. You can now start using WinDriver to access your hardware and generate your driver code!

Restricting Hardware Access on Linux

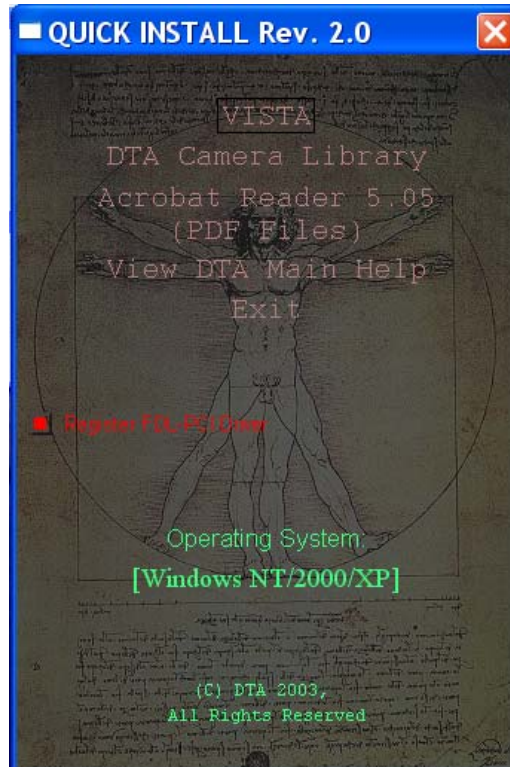
CAUTION:

Since **/dev/windrvr6** gives direct hardware access to user programs, it may compromise kernel stability on multi-user Linux systems. Please restrict access to the DriverWizard and the device file **/dev/windrvr6** to trusted users.

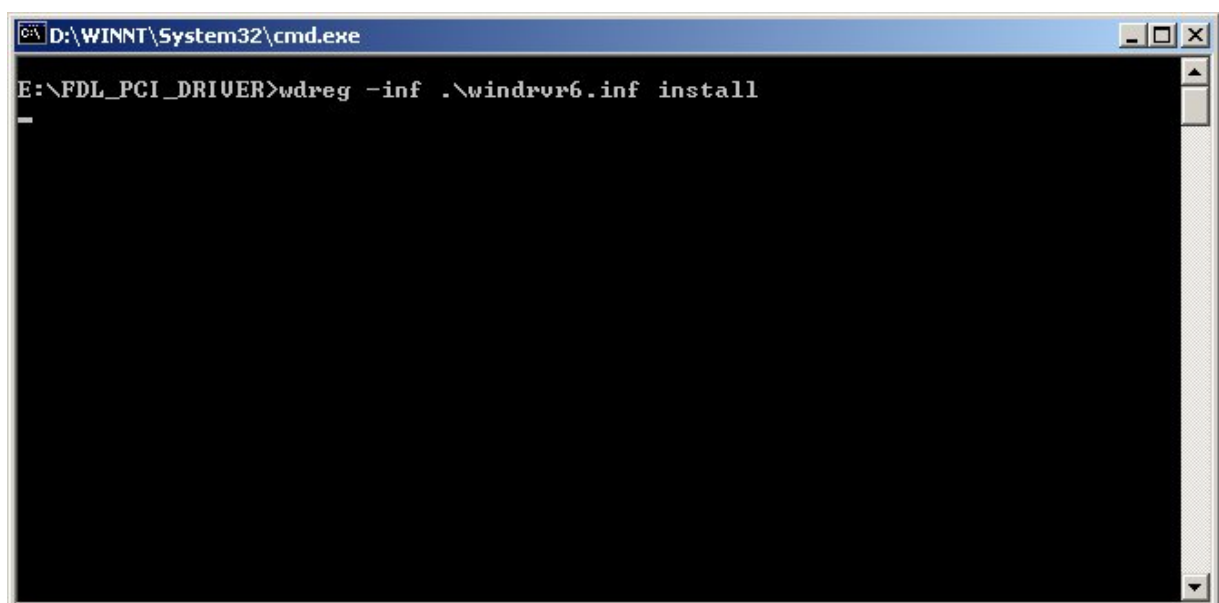
For security reasons the WinDriver installation script does not automatically perform the steps of changing the permissions on **/dev/windrvr6** and the DriverWizard executable (**wdwizard**).

WINDRIVER REGISTRATION

- 1) After the installation of the drivers for the FDL-PCI card, we need to record the files to make them work properly. Insert the "VISTA LITE" CD into the CD-ROM reader, wait a few seconds so as to allow the PC to load the "QUICK INSTALL" menu.



- 2) Once the PC has loaded the "QUICK INSTALL" menu, click on "VISTA". The PC will start the installation of the necessary drivers by loading a window like the one shown below.



Once you have installed the drivers and the "ViSTA" software, restart the PC as on demand.

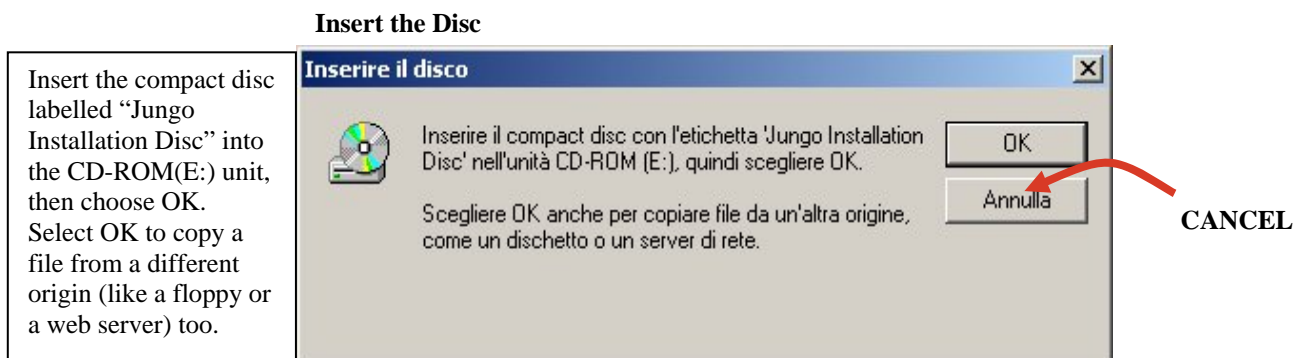
With reference to WINDOWS 2000 and WINDOWS XP OS, please go on up to point 3, while to point 6 as far as any other OS is concerned.

- 3) Once the restart has been performed, the PC will inform you - by a window like the one shown below - that no digital signature was found for this software. Click on "Yes" to continue the copy of the files.

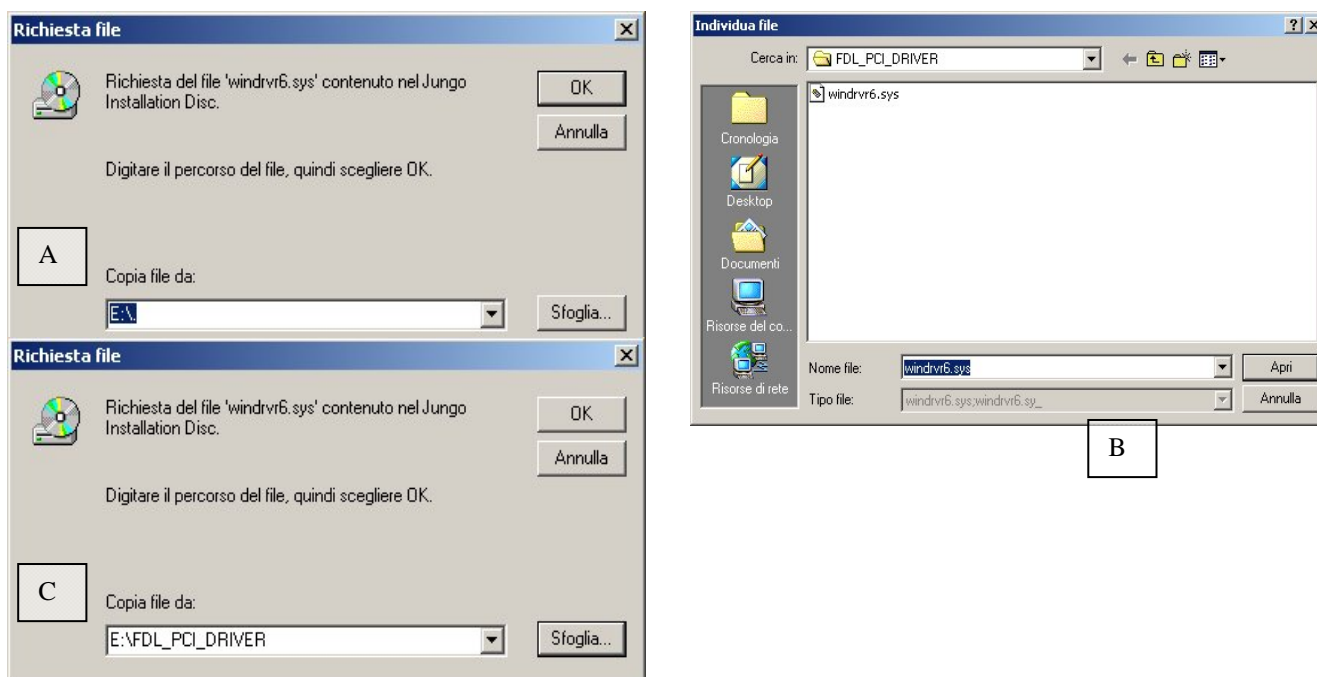


YES

- 4) The PC will ask you to insert the disc labelled "JUNGO INSTALLATION DISC"; insert the "ViSTA" CD and click on "OK".



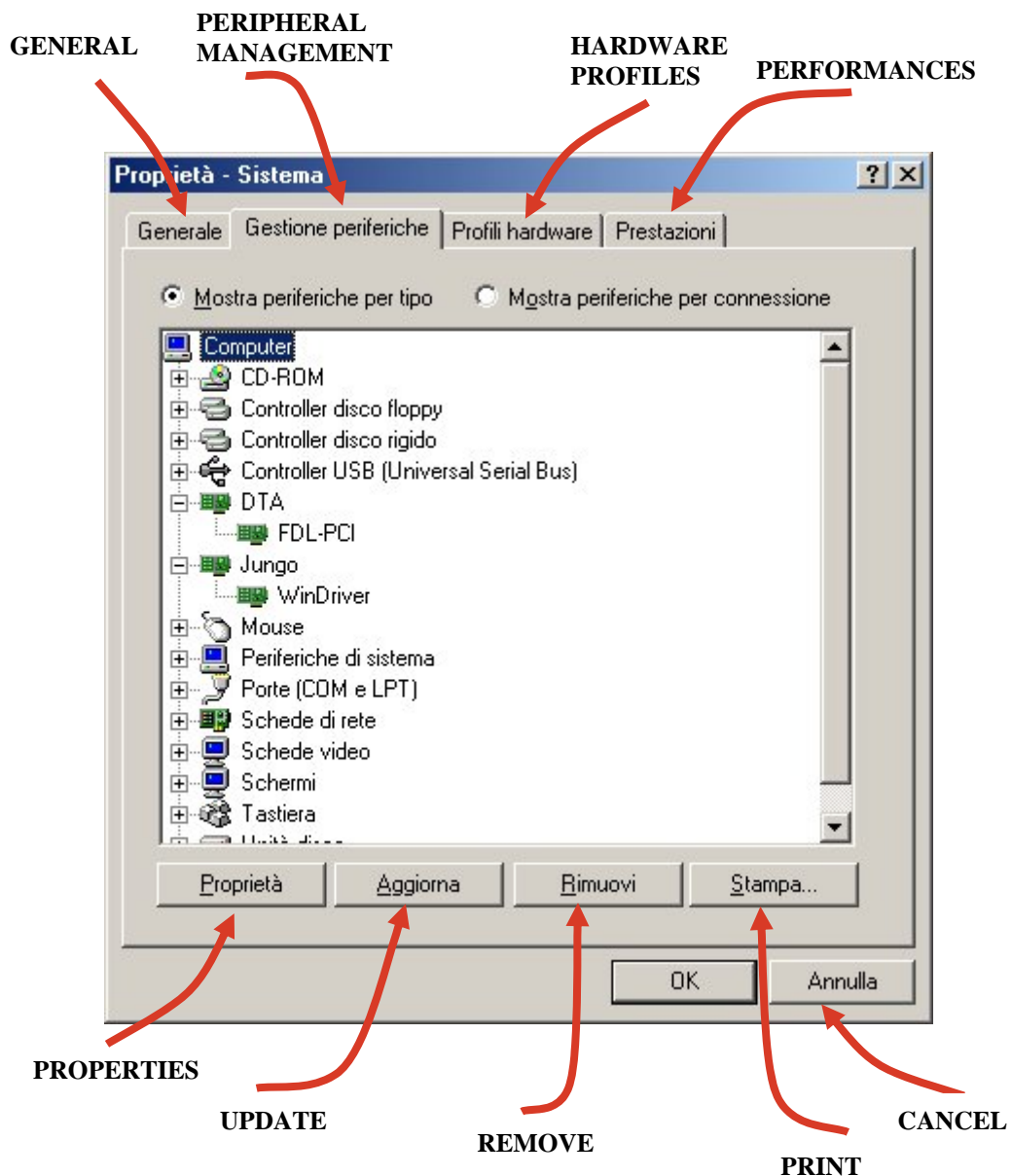
- 5) After having pressed "OK", the PC will ask (by opening the **A** window) where the original file is located. Click on "Browse"; the **B** window will open : please check if the open folder is D:\FDL_PCI_DRIVER (D represents the letter with whom the CD-ROM reader is being identified). Select the **windrvr6.sys**, then click on "Open". If the **C** window appears, click on "OK" and the PC will automatically finish the copy of the files.



- 6) Once you have finished to install the necessary drivers for the FDL-PCI card and WINDRIVER, check the correct installation of the two peripherals.

When you use WINDOWS 98 and WINDOWS ME, you have to click on "COMPUTER RESOURCES" by means of the right key of the mouse. A menu with different options will open; click on "PROPERTIES" by means of the left key of the mouse. A window with different sections will open; click on "PERIPHERAL MANAGEMENT" and check if the two peripherals have been installed correctly (see the image below).

When you use WINDOWS 2000 and WINDOWS XP, you have to click on "COMPUTER RESOURCES" by means of the right key of the mouse. A menu with different options will open; click on "PROPERTIES" by means of the left key of the mouse. A window with different sections will open; click on "HARDWARE" and then on "PERIPHERAL MANAGEMENT". Then check if the two peripherals have been installed correctly (see the image below)



The tests have been carried out with the following OS:

WINDOWS 98 SECOND EDITION

WINDOWS 2000 WITHOUT SERVICE PACK

WINDOWS 2000 WITH SERVICE PACK 3

WINDOWS ME

WINDOWS XP WITHOUT SERVICE PACK

WINDOWS XP WITH SERVICE PACK 1

INDEX

C

<i>CONNECTING THE FDL INTERFACE CARD TO THE PC</i>	6
--	---

L

<i>LIBRARY & FDL-PCI INSTALLATION</i>	7
<i>LINUX</i>	15

P

<i>PERSONAL COMPUTER MINIMUM REQUIREMENTS</i>	4
<i>PERSONAL COMPUTER RECOMMENDED REQUIREMENTS</i>	4

S

<i>SCHEME OF THE INSTALLATION PROCEDURE</i>	5
---	---

W

<i>WINDOWS 98</i>	7
<i>WINDOWS ME</i>	10
<i>WINDOWS 2000</i>	11
<i>WINDOWS XP</i>	14
<i>WINDRIVER REGISTRATION</i>	17



Viale Campania, 23
56021 Cascina (Pisa) - ITALY
web site: www.dta.it
e-mail: sales@dta.it