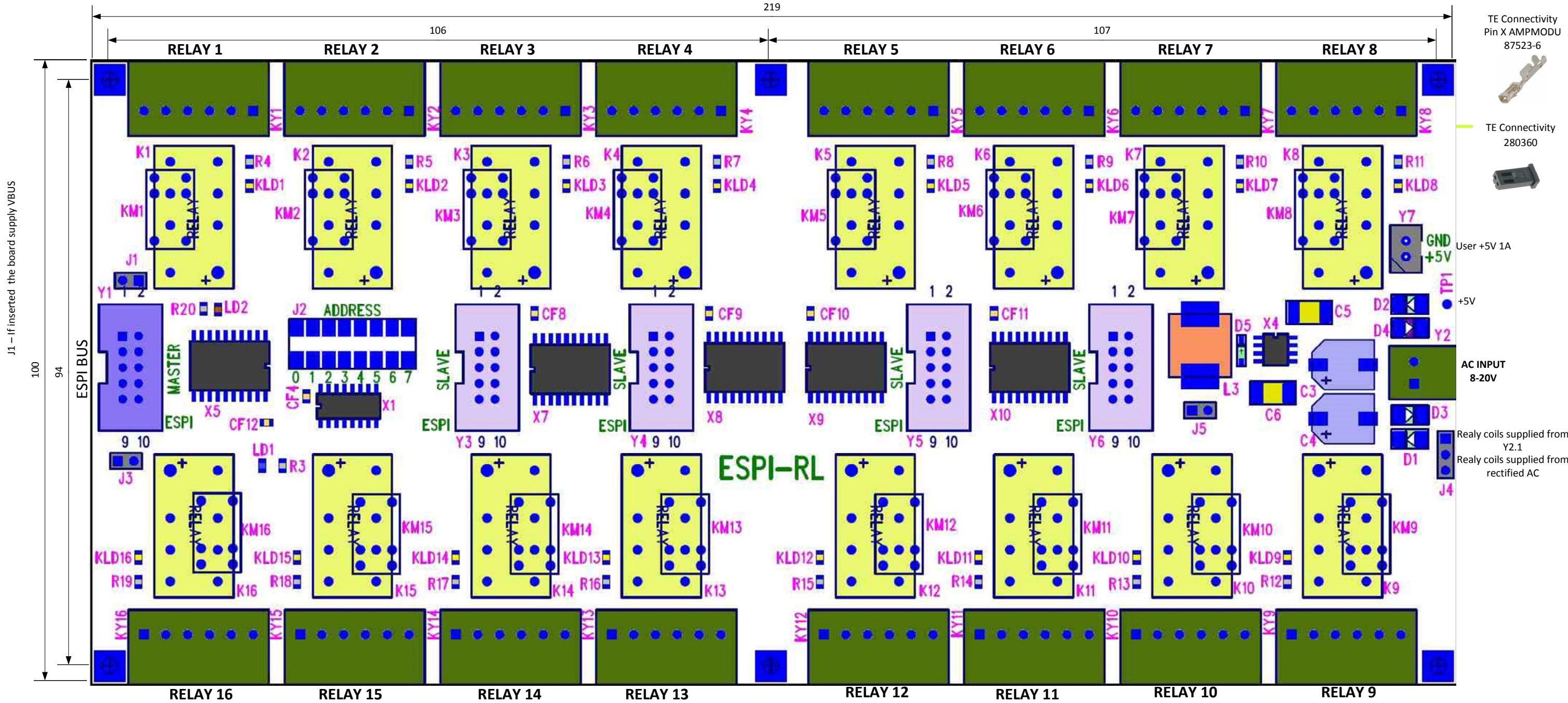
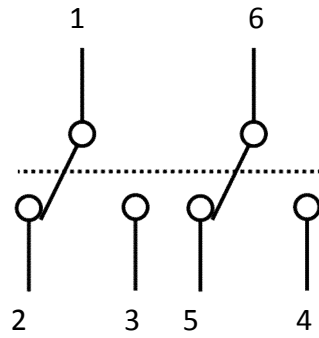




ESPI-RL



Relay maximum ratings:
2A 25V DC
1A 120V AC



RELAIS CONNECTOR

Female connector for relais output:
TE Connectivity 796640-6



Female connector for AC input:
TE Connectivity 284506-2



Rev. 1 Information furnished by Officina Turini is believed to be accurate and reliable. However, no responsibility is assumed by Officina Turini for its use, nor for any infringements of patents or other rights of third parties that may result from its use. Specifications subject to change without notice. No license is granted by implication or otherwise under any patent or patent rights of Officina Turini Trademarks and registered trademarks are the property of their respective companies.